

Guidance for Health Staff

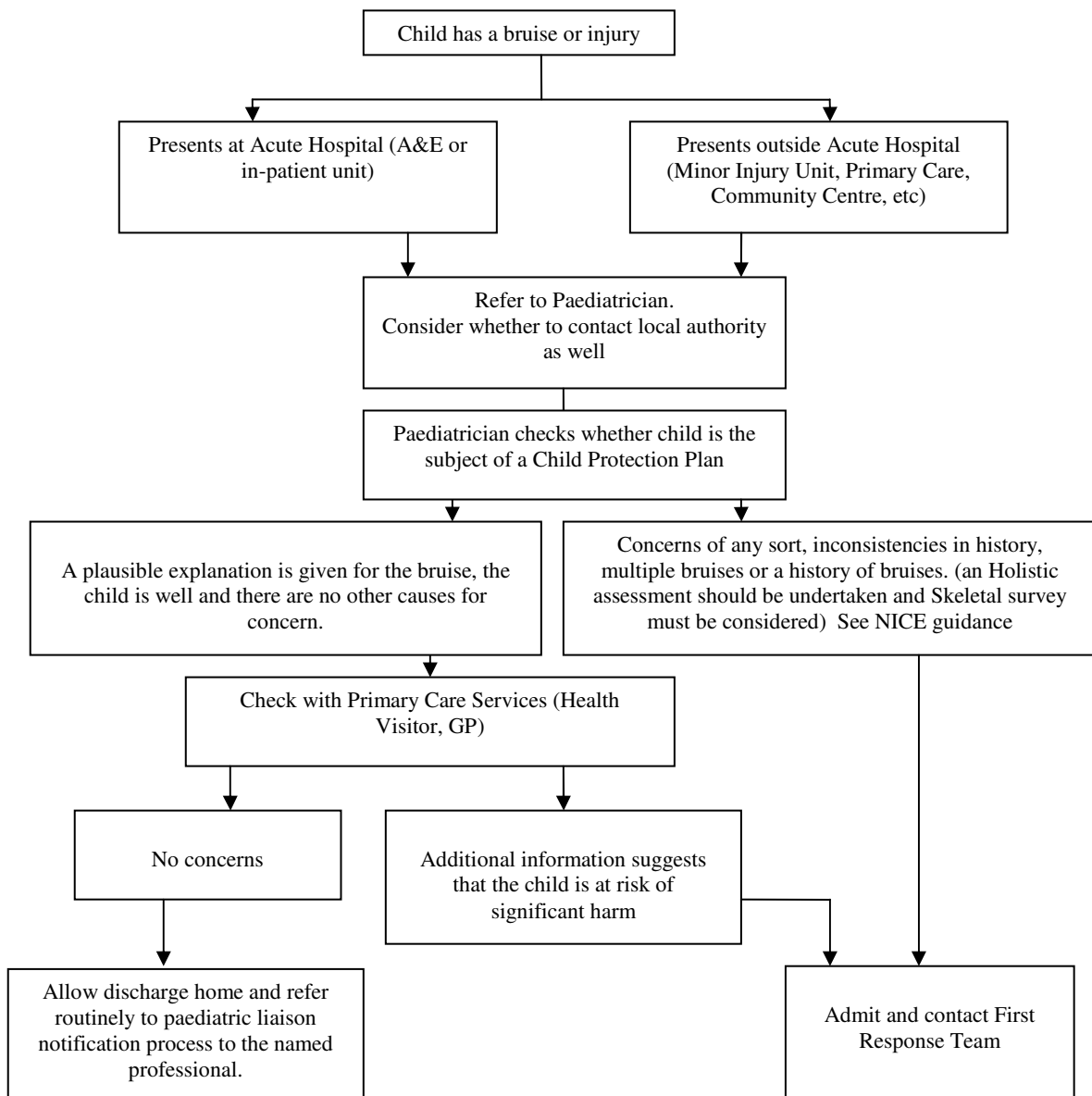
Bruises in Non- Mobile Children.

Share concerns – do not operate alone.

This guidance is for presentation of such a child in any health care setting. Parents/carers must be informed at the outset that this guidance exists and that as a routine, further enquiries with other agencies will be made.

Introduction

Any bruising in a child who is non-mobile is a cause for concern and must always be fully assessed. A bruise should never be interpreted in isolation and must always be considered in the context of the child's medical and social history, development and any explanation given. "Those who don't cruise rarely bruise" (Maguire et al 2005a; Sugar, Taylor & Feldman 1999)



A child must not be discharged from hospital without agreement of a Paediatric Consultant and/or Social Worker/Police.

Information Sharing

Ensure that you have documented the examination findings, your thoughts/opinions and any information you have shared and with whom.

Further information is available at;

- Staffordshire Safeguarding Children Board website; www.staffsscb.org.uk
- Core-info:bruises on children www.nspcc.org.uk/inform
- Information Sharing Guidance for Practitioners and Managers (HM Government)
- Child Protection Companion April 2006. Royal College of Paediatrics and Child Health